

## STH1000 – Handheld Thermal Camera Range Examples

---

The focal range of the images sensor in the STH1000 is set to infinity, this mean you are able to see as far as the clouds for example. As the range gets greater than 200m, it becomes difficult to classify what the object is you are looking at.

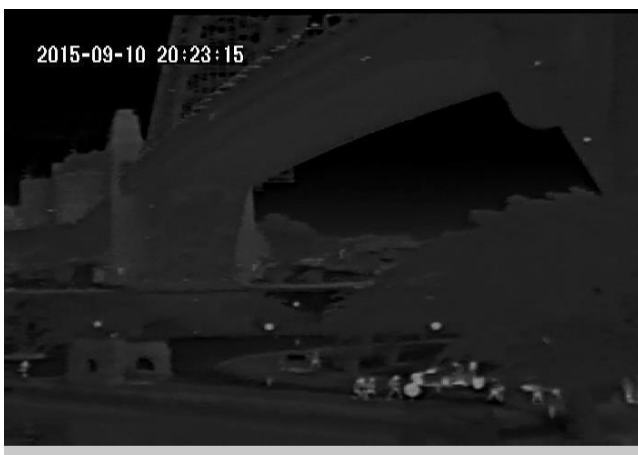
All images below were captured from Bradfield Park at Kirribilli at various ranges to showcase what is visible at different detection ranges.



**People on seat with car in foreground approx. 40m**



**People at Ferry station approx. 60m**



**People under Harbour Bridge at approx. 80m**



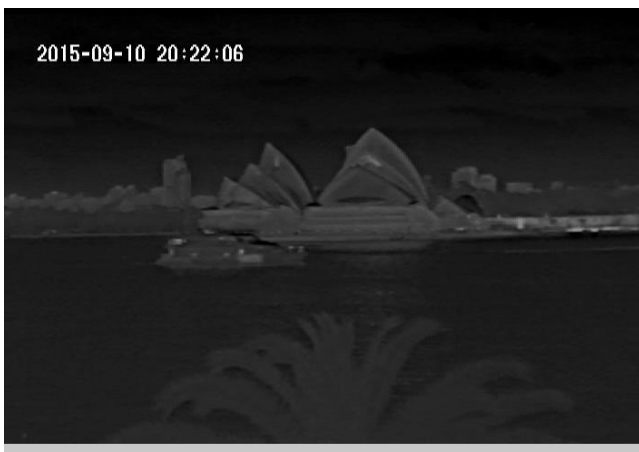
Person visible through gate approx. 135m



People walking at the point approx. 185m



Harbour Bridge at approx. 450m



Opera House at approx. 800m